

# **OPTION 1- SIMPLE RENOVATION**

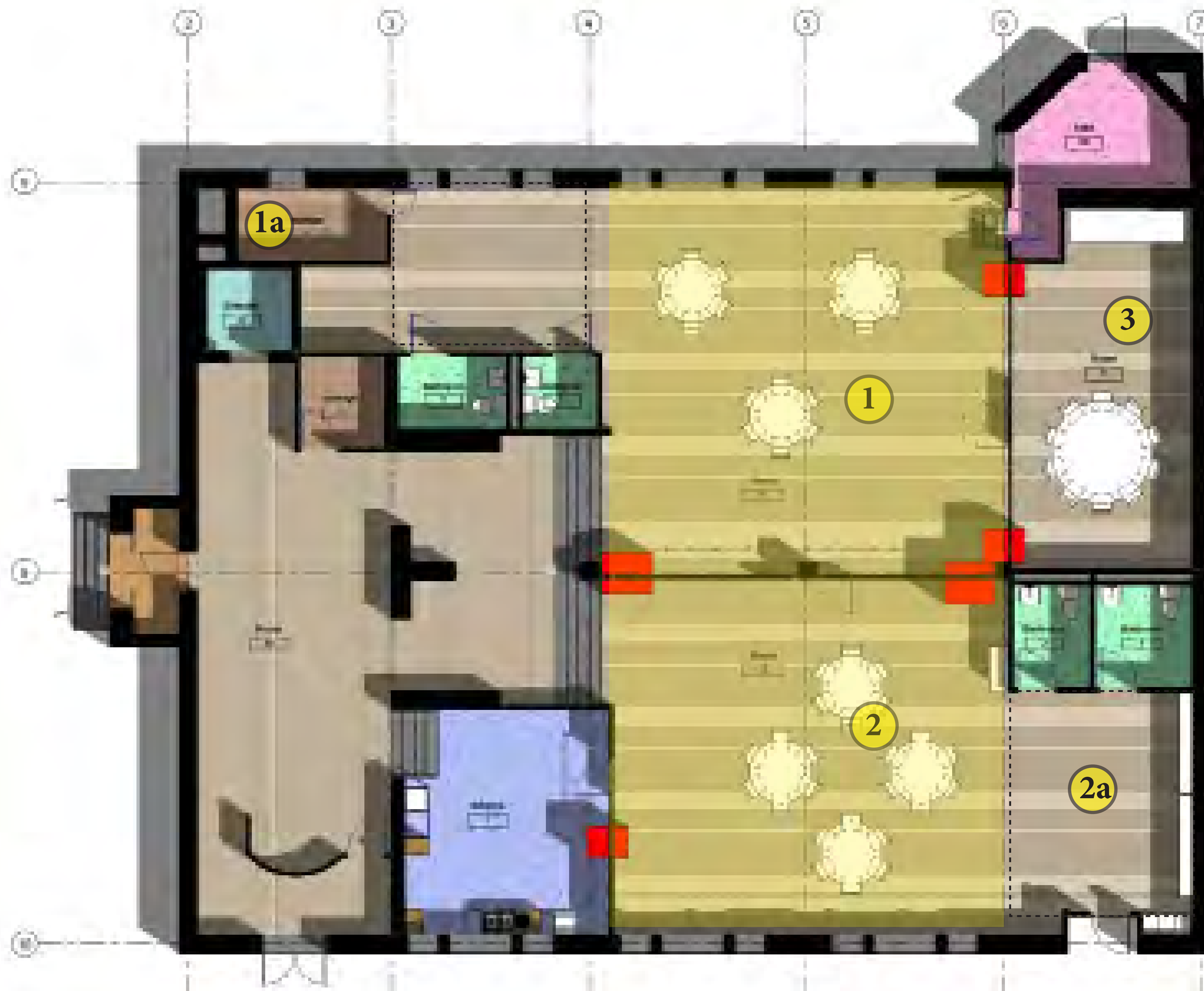
**‘KEEP THE NAZZARO CENTRE BUILDING EXCLUSIVELY FOR THE LOCAL COMMUNITY ACTIVITIES ONLY’**

## **KEY PROGRAMME**

- SENIOR’S ACTIVITIES**
- COMMUNITY MEETINGS**
- TODDLERS & MOTHERS**



# FIRST FLOOR - SENIOR CENTER (OPTION 1)



- Room
- Bathroom
  - Elevator
  - Kitchen
  - Room
  - Stair
  - storage



*"...we want to keep our seniors in the community"*

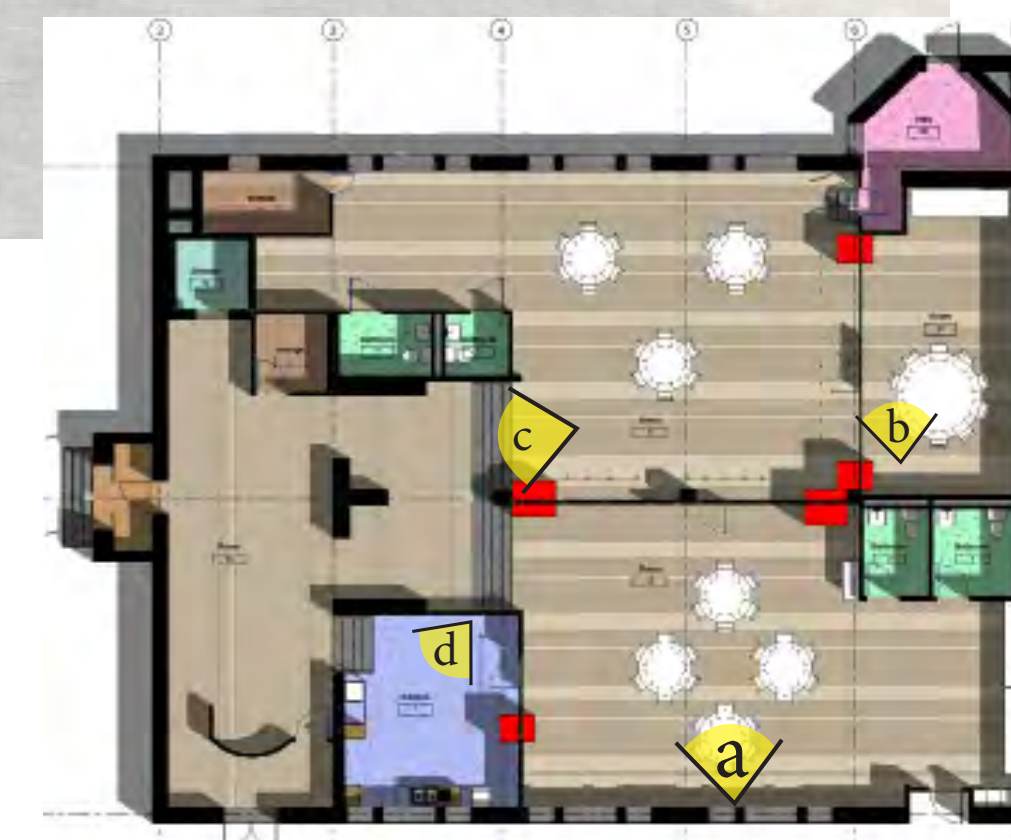


FLOOR OCCUPANCY	FLOOR USE	AREA (SQF)	# PEOPLE
① & ②	Smaller community activities	960 sqf, 873sqf	
① + ②	Large community meetings	1,833 sqf	180
③	private meetings room	399 sqf	25-30
②a	Open meeting and storage	250 sqf	
①a	Baby Stroller storage	74 sqf	

# FIRST FLOOR - SENIOR CENTER (OPTION 1)



**a. Community Meeting Hall** ① + ②



**b. Small Meeting Room** ③



**c. Exhibition**



**d. Kitchen**

# SECOND FLOOR - YOUTH CENTER (OPTION 1)



“...after-school youth activities”



FLOOR OCCUPANCY	FLOOR USE	AREA (SQF)	# PEOPLE
④ & ⑤	Computer lab & youth meetings	1070 sqf, 710 sqf	
④ + ⑤	Large youth multipurpose	1780 sqf	
⑥	Fitness Centre/Gym	530 sqf	
⑦	Toilets & showers	644 sqf	

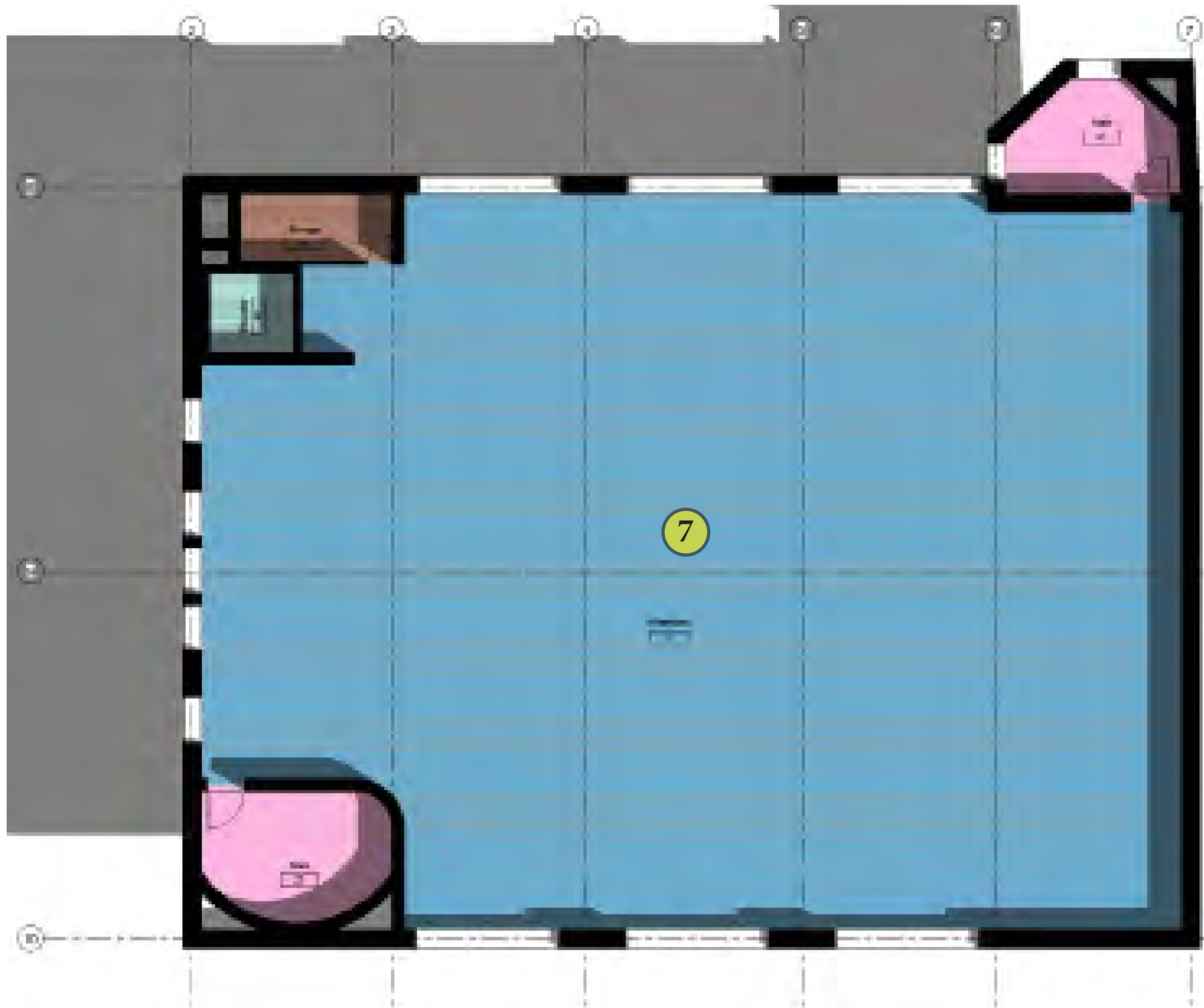
# SECOND FLOOR - YOUTH CENTER (OPTION 1)



**e. Fitness Room**



# THIRD FLOOR - TODDLERS & SENIOR CENTER (OPTION1)



*“...mothers and toddlers, seniors indoor multi-use recreational space”*



FLOOR OCCUPANCY FLOOR USE		AREA (SQF)	# PEOPLE
7	Multi-purpose Toddlers & Youth Activities Hall	4,030 sqf	

# OPTION 2- Community Auditorium

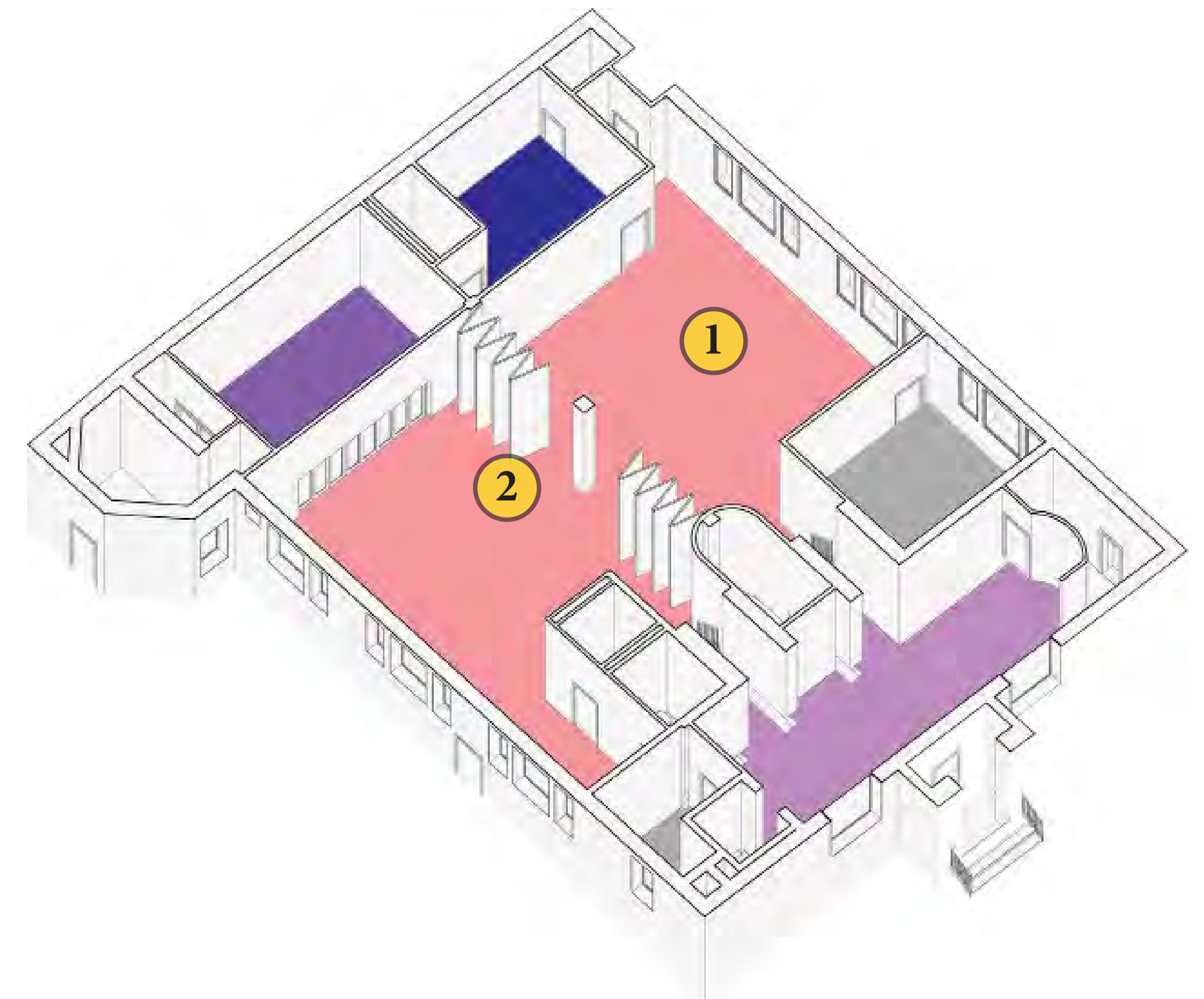
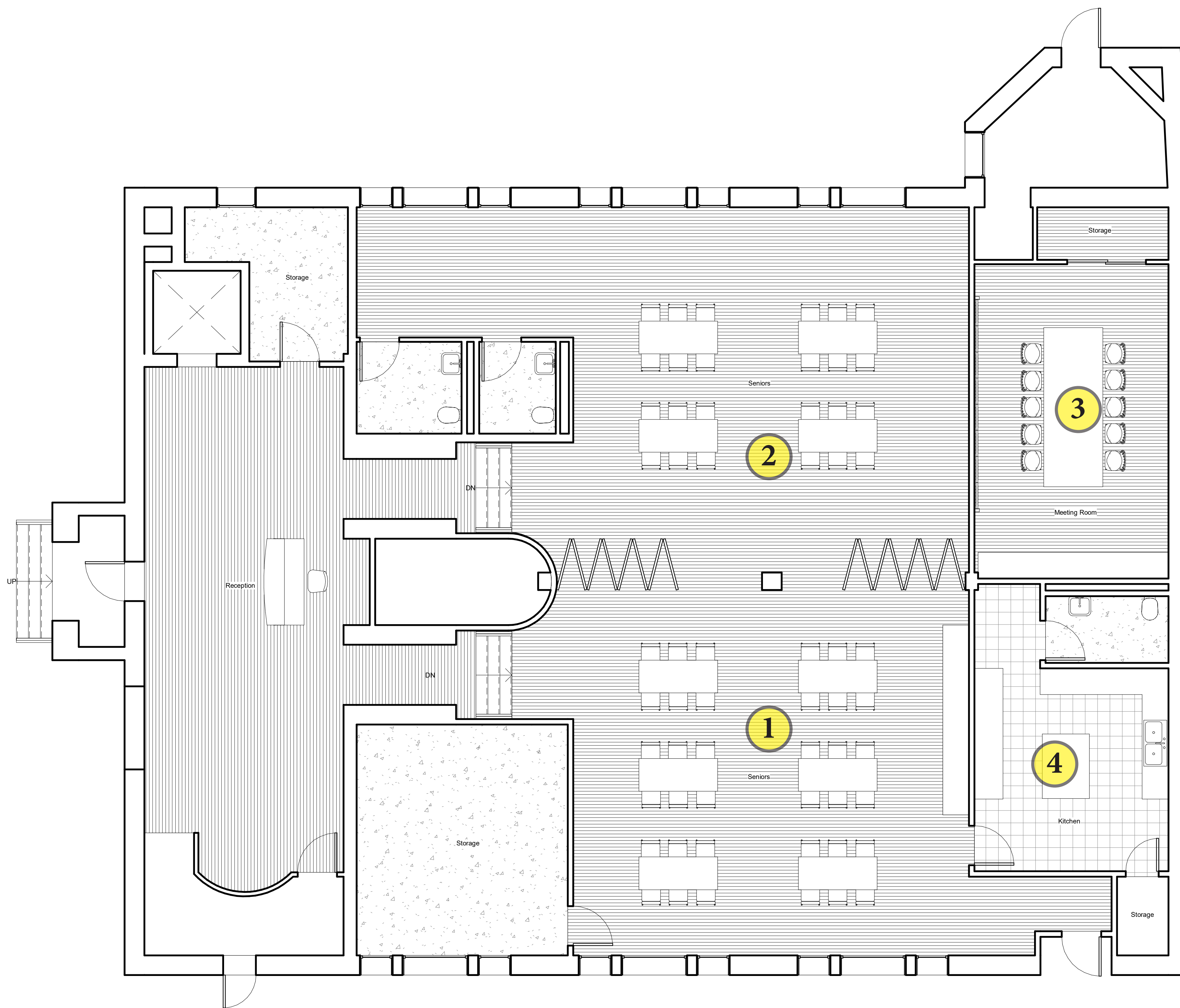
## THE NAZZARO BUILDING +COMMUNITY AUDITORIUM'

### KEY PROGRAMME

- SENIOR'S ACTIVITIES
- COMMUNITY MEETINGS
- MULTIPURPOSE AUDITORIUM
- SUPPORT OFFICES



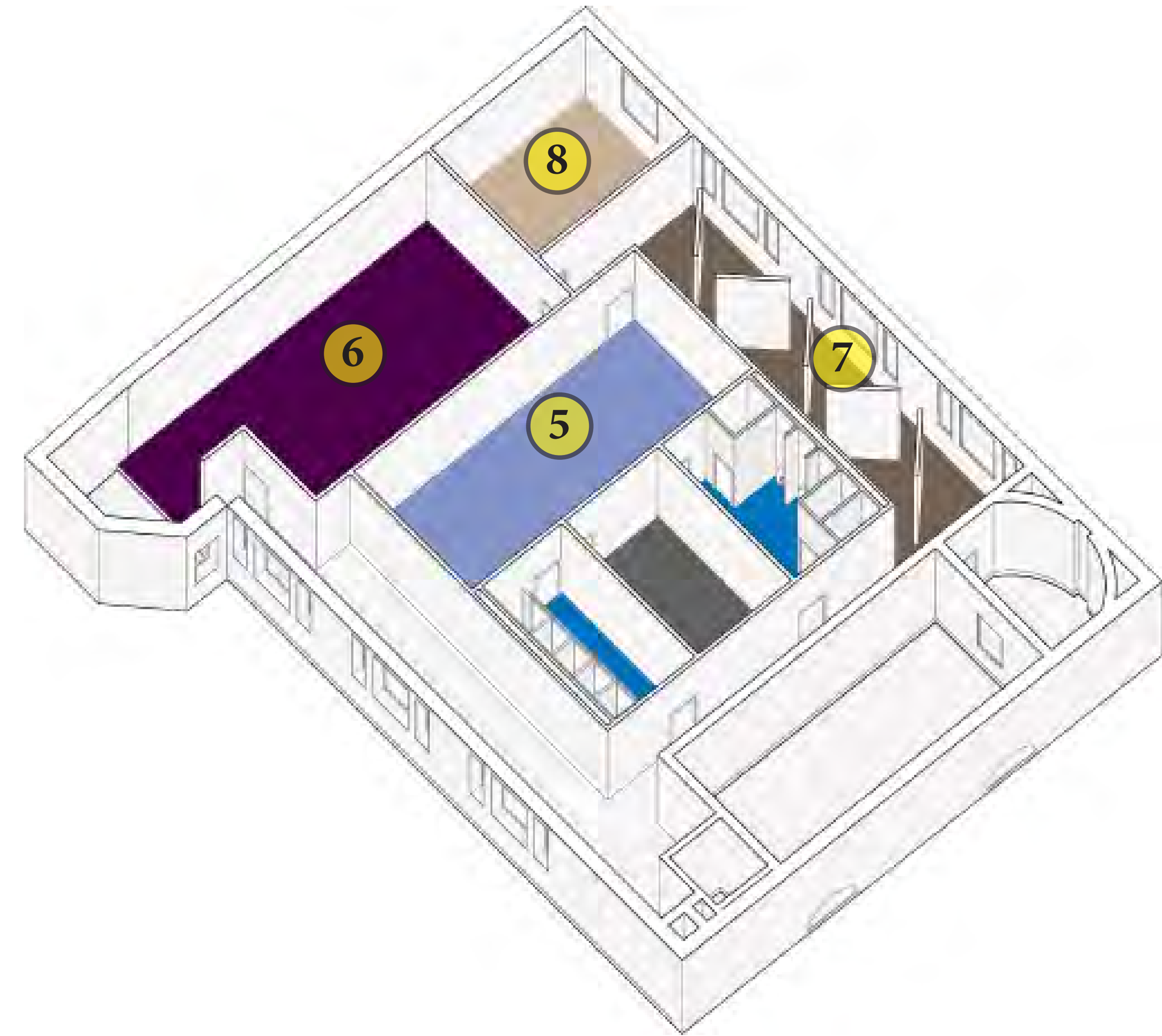
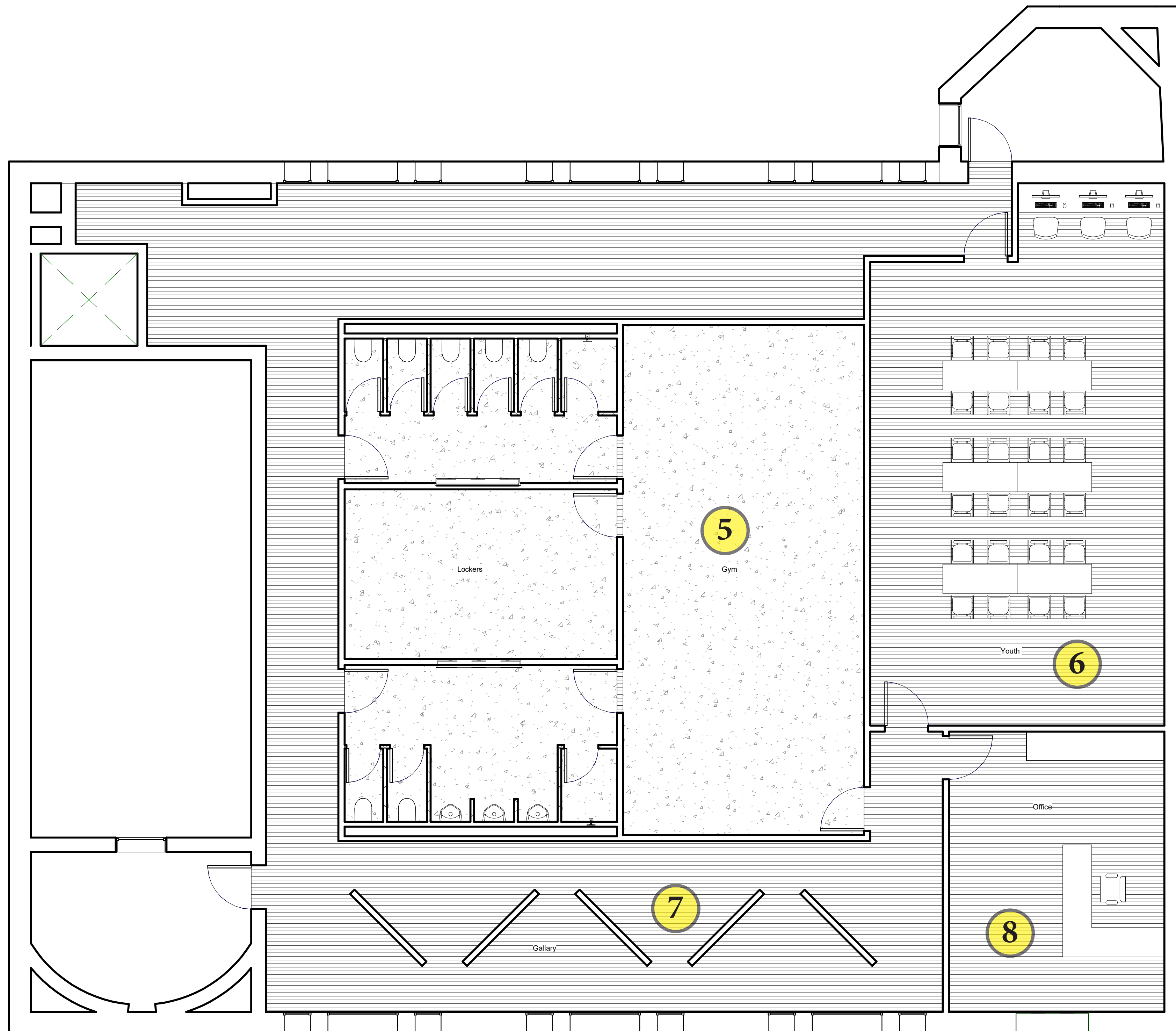
# FIRST FLOOR- SENIORS + COMMUNITY (OPTION 2)



FLOOR OCCUPANCY	FLOOR USE	AREA (SQF)	# PEOPLE
① & ②	Smaller community meetings		
① + ②	Large community meetings	1,710sqf	170
③	Private meetings room	322 sqf	30
④	Community kitchen	210 sqf	



# SECOND FLOOR- YOUTH & AFTER SCHOOL (OPTION 2)

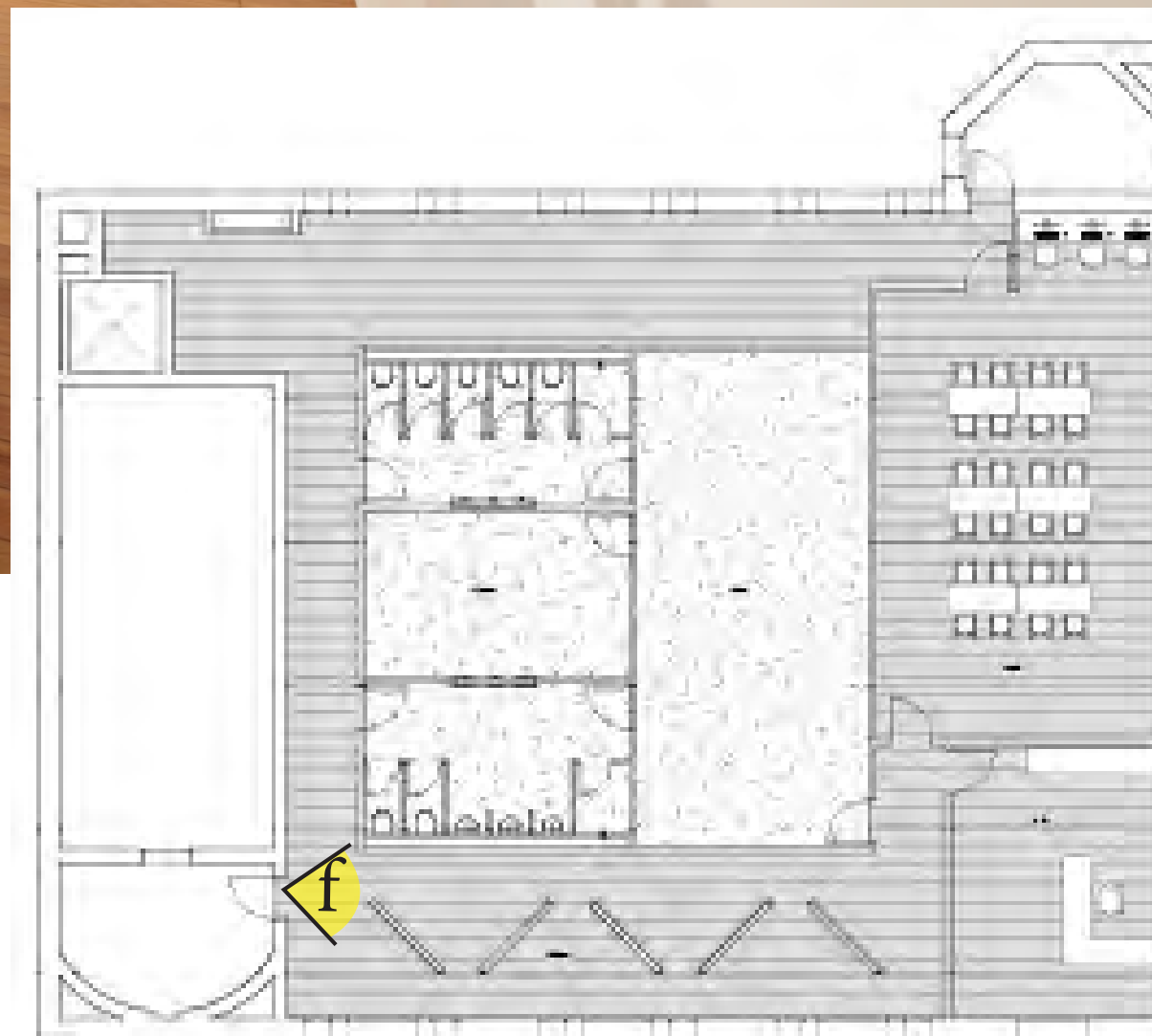


FLOOR OCCUPANCY	FLOOR USE	AREA (SQF)	# PEOPLE
5	Fitness gym	560 sqf	40
6	Meeting space & classroom	620 sqf	50
7	display gallery	539 sqf	
7	Office space	266 sqf	

# SECOND FLOOR- YOUTH & AFTER SCHOOL (OPTION 2)



**f. Exhibition & gallery**

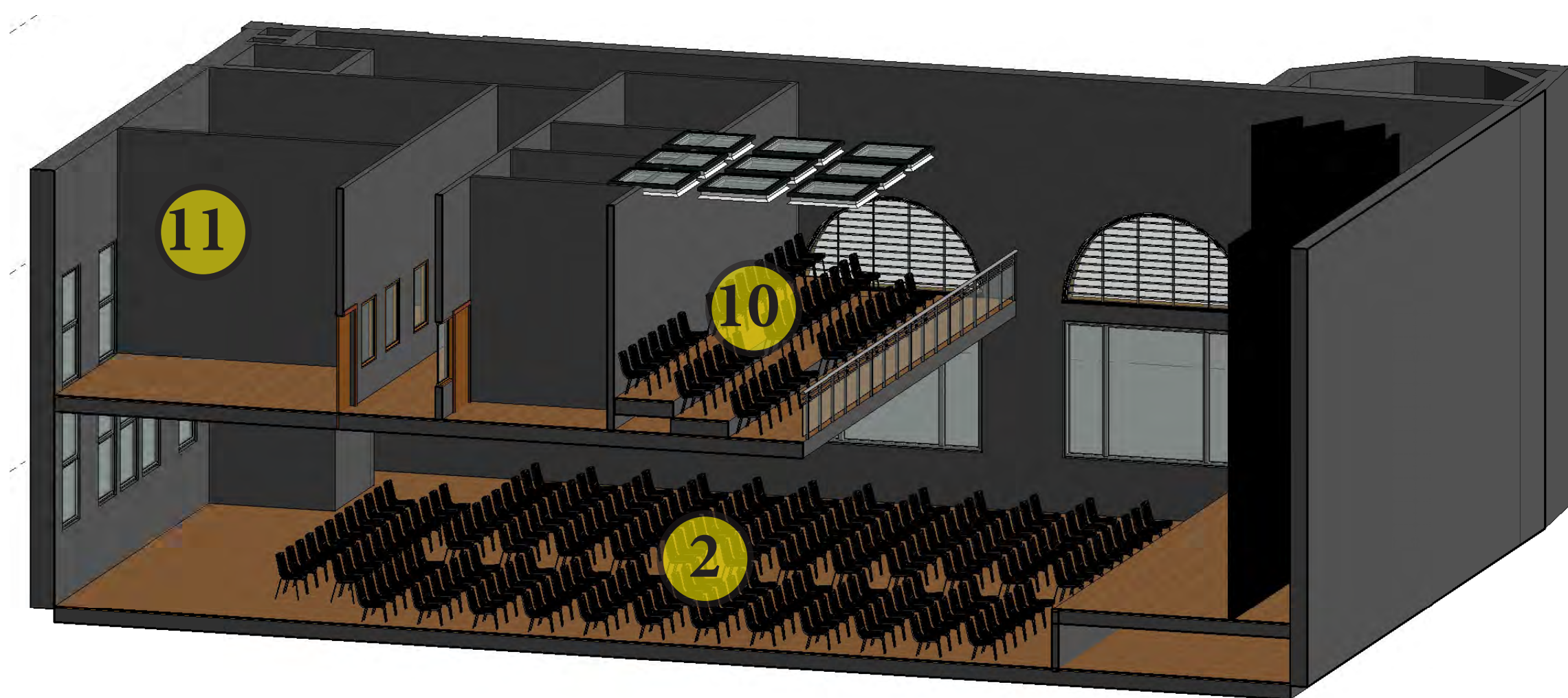
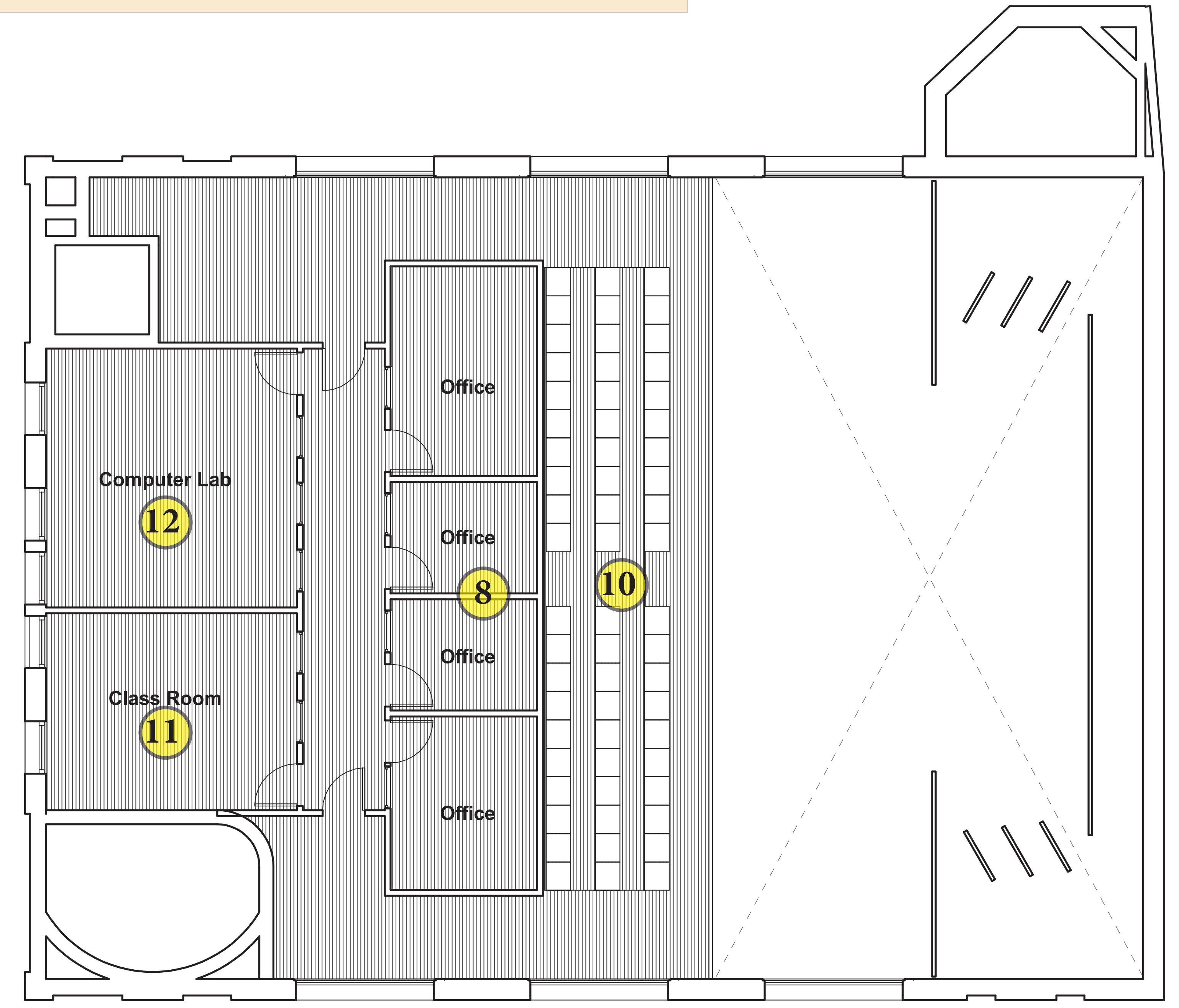
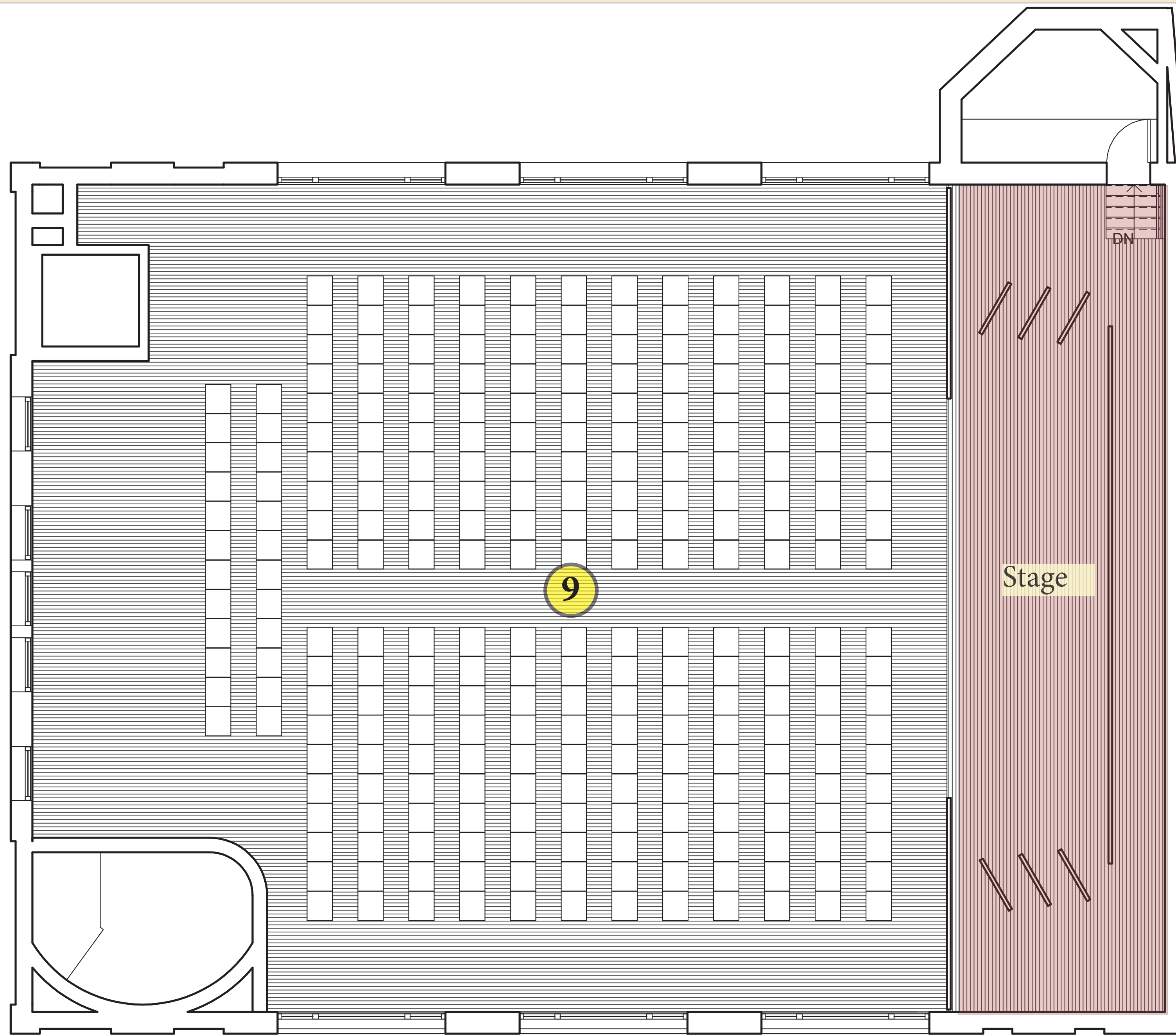


**Exhibition**



**Exhibition**

# THIRD FLOOR- MULTIPURPOSE AUDITORIUM (OPTION 2)



FLOOR OCCUPANCY	FLOOR USE	AREA (SQF)	# PEOPLE
9 & 10	Auditorium Seating	3,591sqf (10 sqf/person)	359
3	classrooms	238 sqf	22
3	computer room	238 sqf	25
8	Office space	464 sqf	

# THIRD FLOOR- MULTIPURPOSE AUDITORIUM (OPTION 2)



**View to Stage:** City Mayor on Stage

**NEMPAC** |     
North End Music & Performing Arts Center



**h. Auditorium**

